

UNIVERSITIES AND SOCIETAL IMPACT

Anna-Lena Claeys-Kulik
Deputy Director for Policy Coordination & Foresight at EUA

STRATEGIC DIALOGUE ON EUROPEAN UNIVERSITIES

**Panel: European Universities and the sustainable development of their regions,
Studio Europa, Maastricht University, 10 May 2023**

Why we need to talk about impact

- Link with accountability & increasing pressure through multiple crises and challenges
- Quest to measure universities contribution to society
- Where it plays a role:
 - University rankings
 - University funding and performance measurement
 - Academic career assessment
 - Policy debates (e.g. European Universities Initiative)

2023 EUA Annual Conference

We need to talk about impact

20 - 21 APR 2023 | CONFERENCE

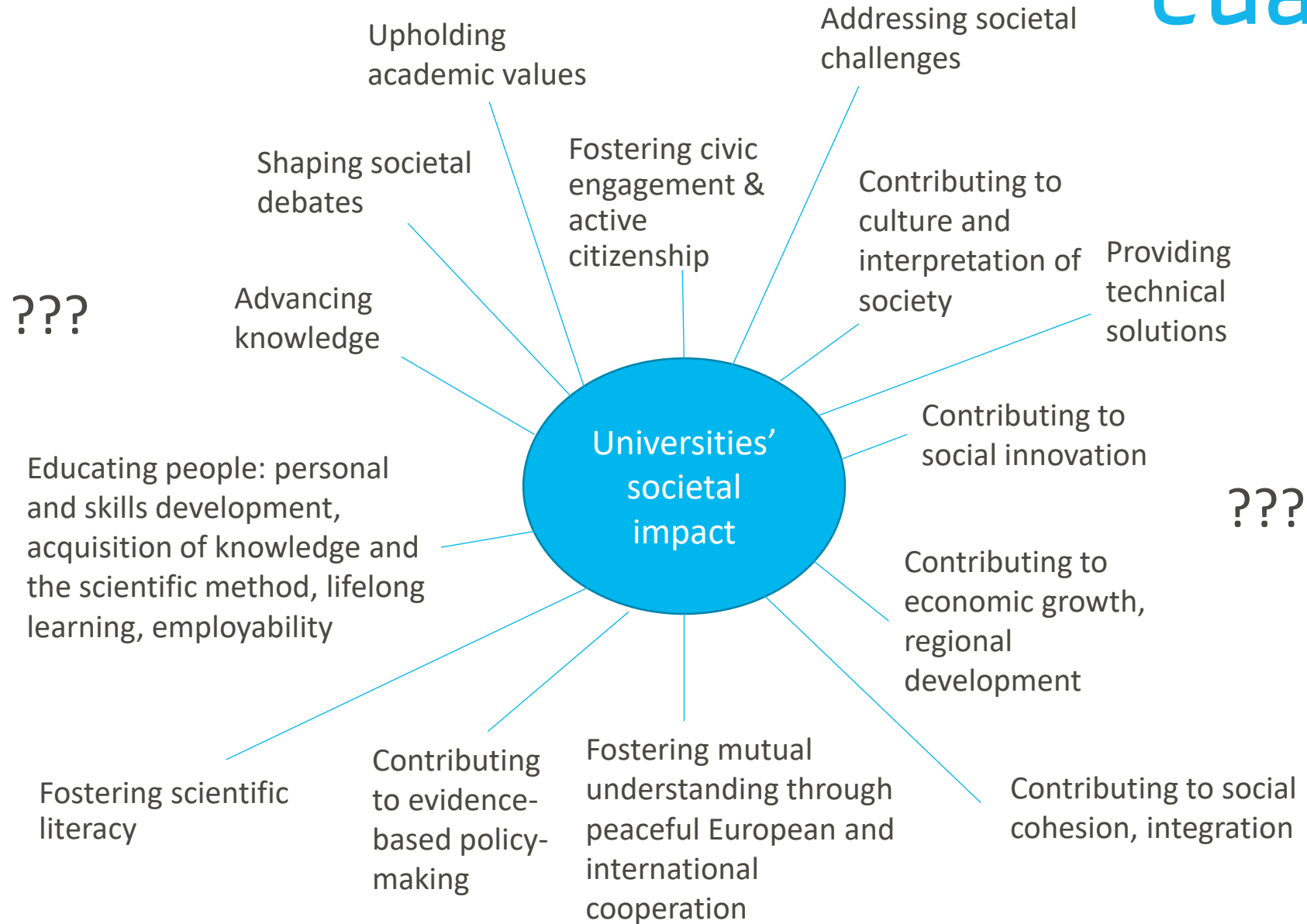
📍 GDAŃSK UNIVERSITY OF TECHNOLOGY | GDAŃSK, POLAND



Photos taken during the conference are now available! Universities have a profound impact on individuals and societies, as well as the policies that govern both. But what do we really mean when we talk about impact? The European University...

[Read more](#)

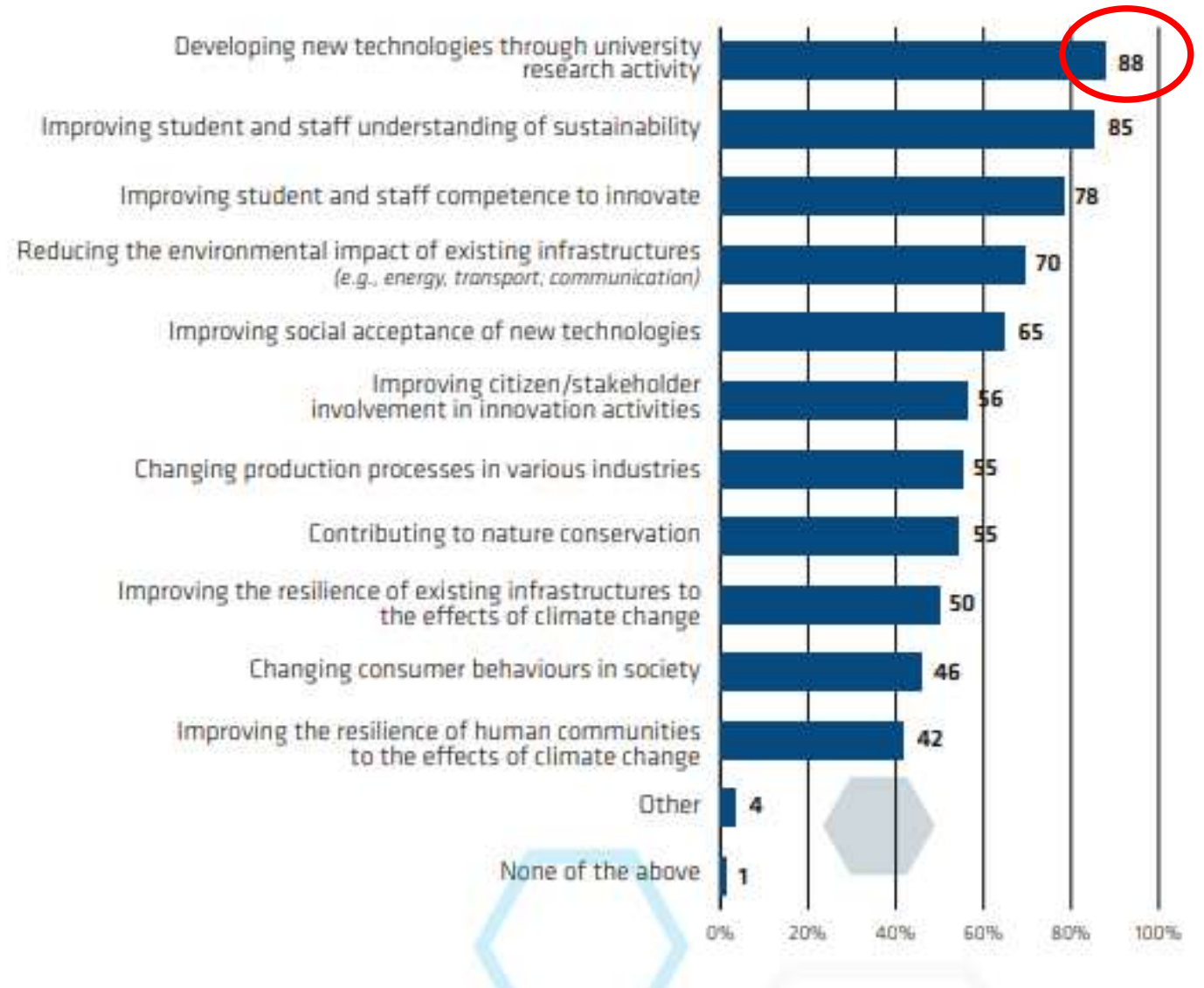
What do we mean by societal impact?



What we know from EUA's work: The innovation survey 2022

Developing new technologies and improving understanding are most often mentioned when it comes to universities contribution to the sustainable transition.

Figure 18: University contributions to innovation for a sustainable transition
Q13. How does your institution contribute to innovation for a sustainable transition? Multiple-choice question.
Number of respondents: 165/166.



What we know from EUA's work: The innovation survey 2022

Improving transfer of research results to innovations is on top of the list of measures considered as very important by the majority of responding universities.

Figure 21: Research and education activities contributing to innovation for a sustainable transition

Q16. At your institution, how important are the following research and education activities in delivering innovation for a sustainable transition?

Number of respondents: 160-164/166.

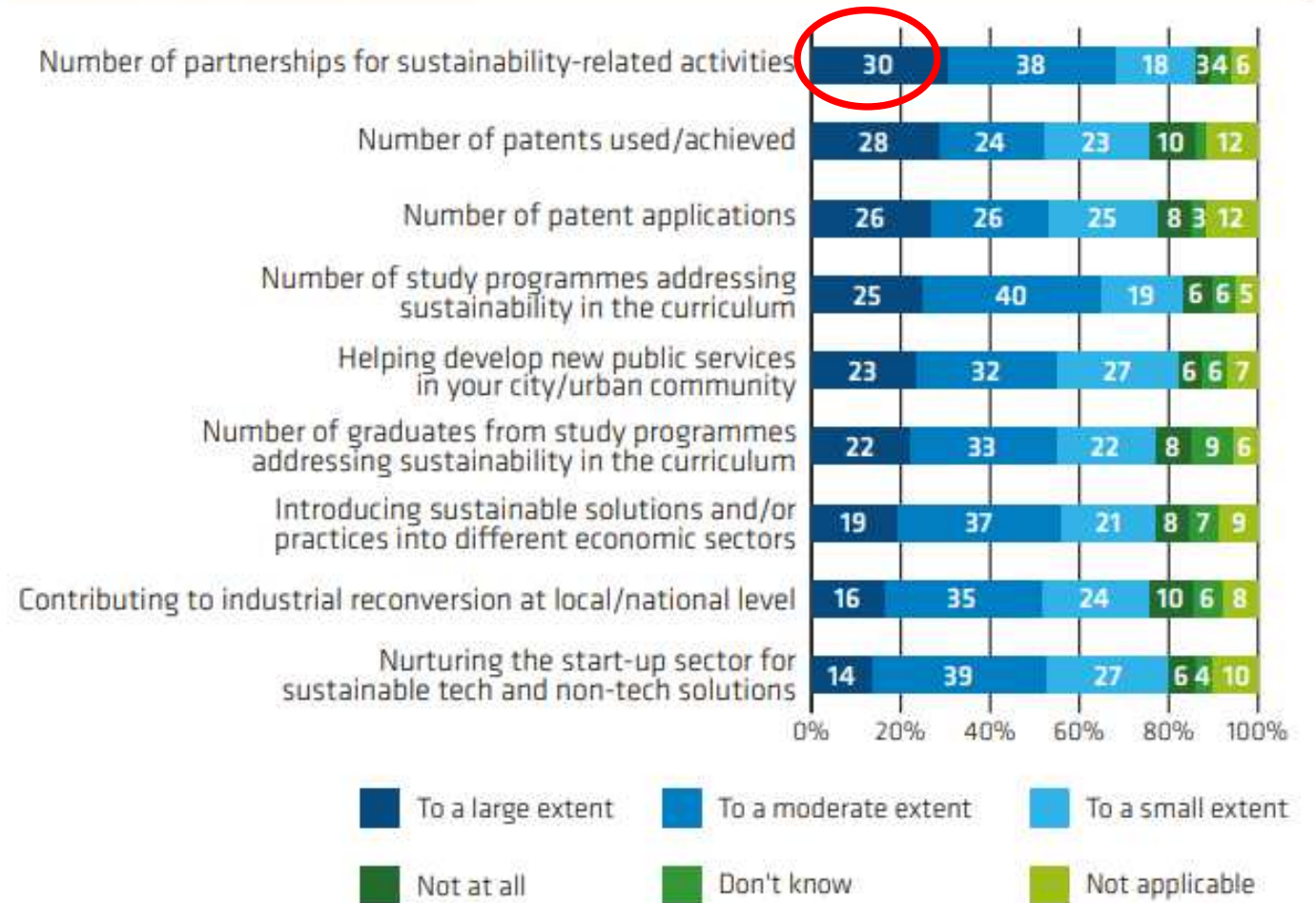


What we know from EUA's work: The innovation survey 2022

The number of partnerships is used most often as measure for success of innovation for sustainability

Figure 22: Measures of success used for innovation in the sustainable transition
 Q17. Which measures of success does your institution use for innovation in the area of sustainable transition?

Number of respondents: 159-163/166.



What we know from EUA's work: Trends survey 2018

Fig. 22 Impact of inclusiveness and social engagement on learning and teaching

At your institution, does inclusiveness and social engagement have any impact on learning and teaching? (Q. 28; N = 288)

The institution encourages student initiatives on civic/social engagement:

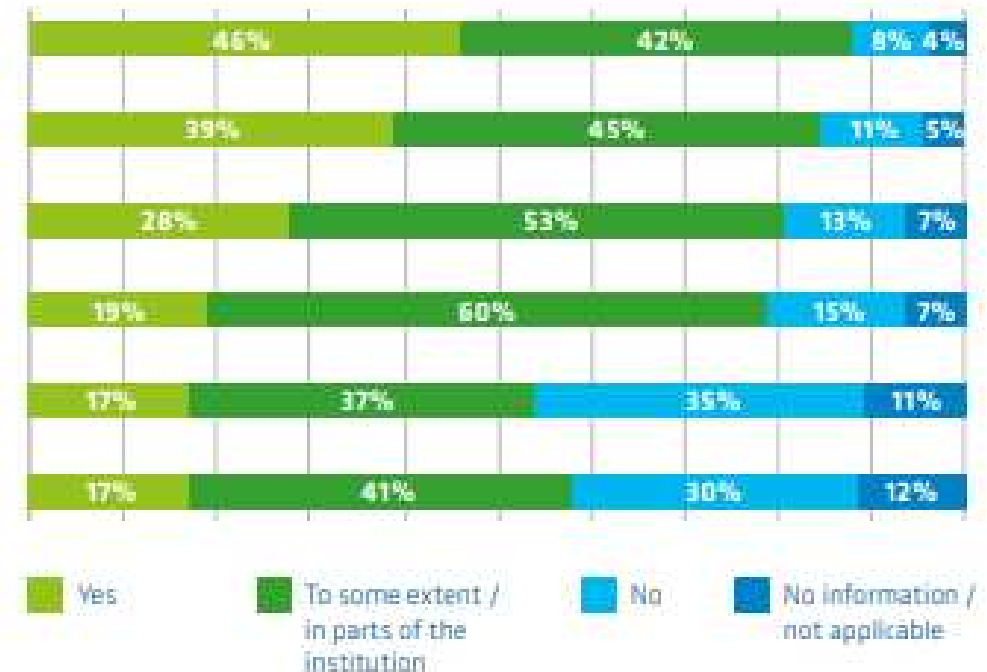
Social inclusion is key priority of our institutional strategy:

Social inclusion is considered in the learning and teaching practice
(diverse classroom):

Social engagement is integrated into the study programmes
(internships with NGOs, community engagement, etc.):

Students can earn credits through participation in civic/social
engagement initiatives:

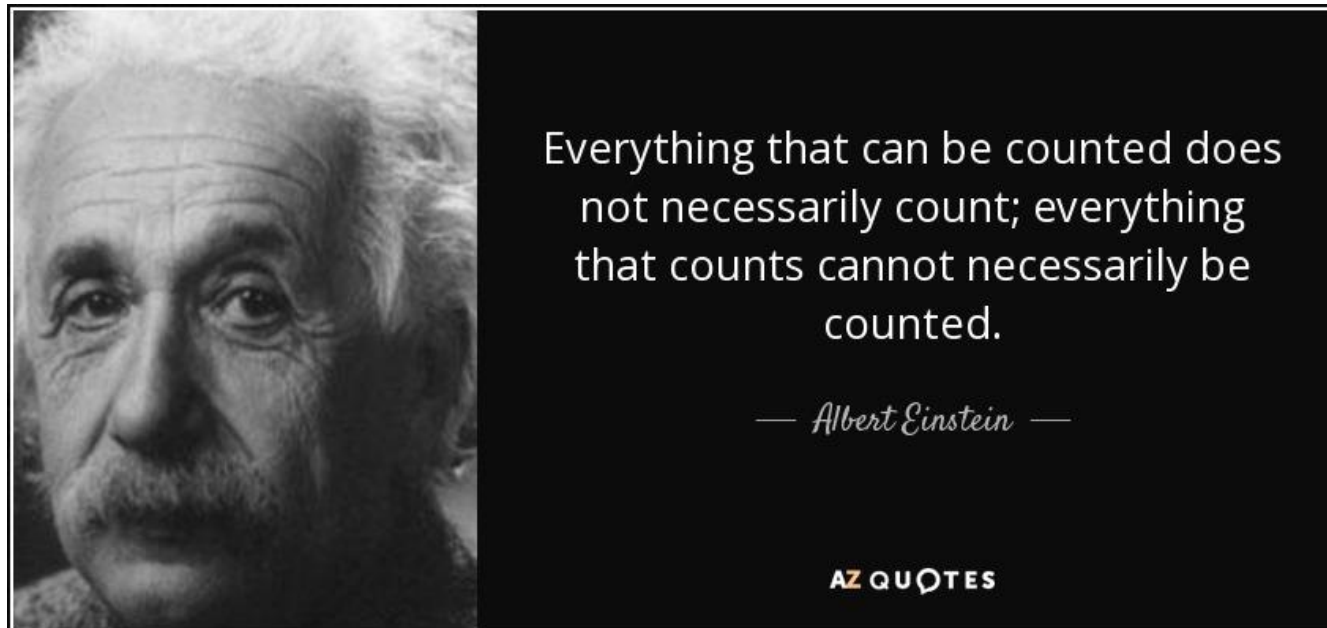
There are special courses in social engagement:



Many universities actively foster societal engagement of their students through learning and teaching.

What's the issue with impact?

- ➔ Societal impact is a broad concept.
- ➔ Quantitative indicators are easier to capture, but give us only part of the picture.
- ➔ Short-term quantifiable outputs vs. long-term impact



Many thanks for your attention!

